

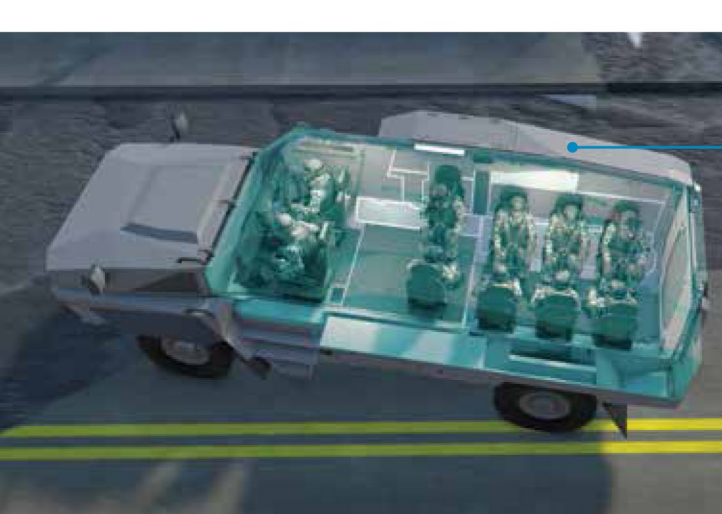
NGPV

NEXT GENERATION PROTECTED VEHICLE



NEXT GENERATION PROTECTED VEHICLE

- Designed to support a wide range of missions: Law enforcement, peacekeeping, armed conflicts and border patrols
- Modular hull allowing for different payload configurations
- Digitised Open Architecture platform that comes with Hybrid Electric Drive option
- Only Hybrid Electric Mine Resistant Ambush Protected Vehicle in production



FULLY DIGITISED ARCHITECTURE

- Digital dashboard



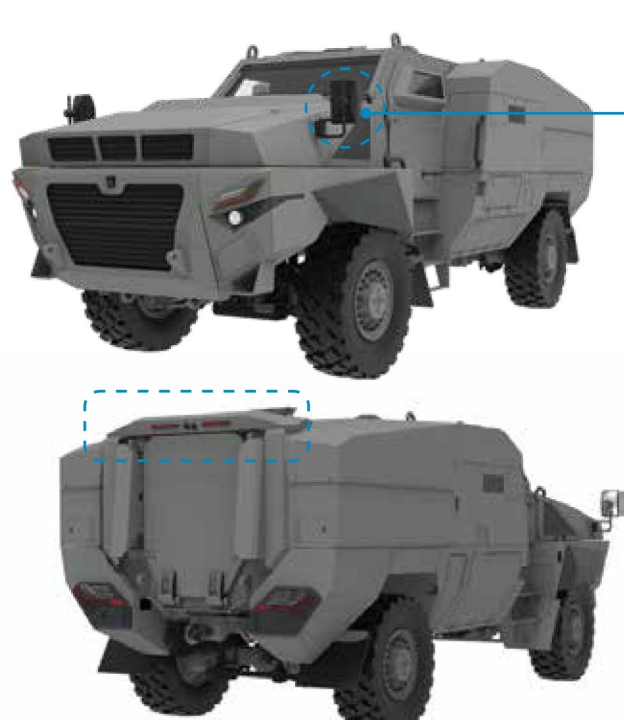
HIGH PAYLOAD WITH CONFIGURABLE PROTECTION

- Troop carrier capable of carrying 10 pax



STRUCTURAL MONOCOQUE HULL

- Increased mine blast protection for improved crew survivability



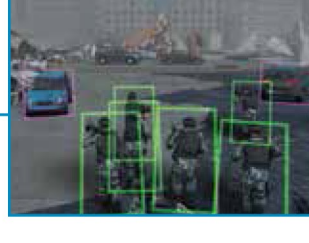
TOP-DOWN SURROUND VIEW

- Elimination of dead ground
- Close terrain manoeuvre
- 3 to 5m all-round views



DIGITAL SIDE MIRROR

- Blind spots elimination
- Improve visibility



ADAS REAR OBJECT DETECTION

- Rear object detection of up to 8m

MAXIMISE PERFORMANCE WITH HYBRID ELECTRIC DRIVE



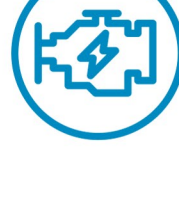
Silent drive: Up to 15km



Silent watch: Up to 24 hrs

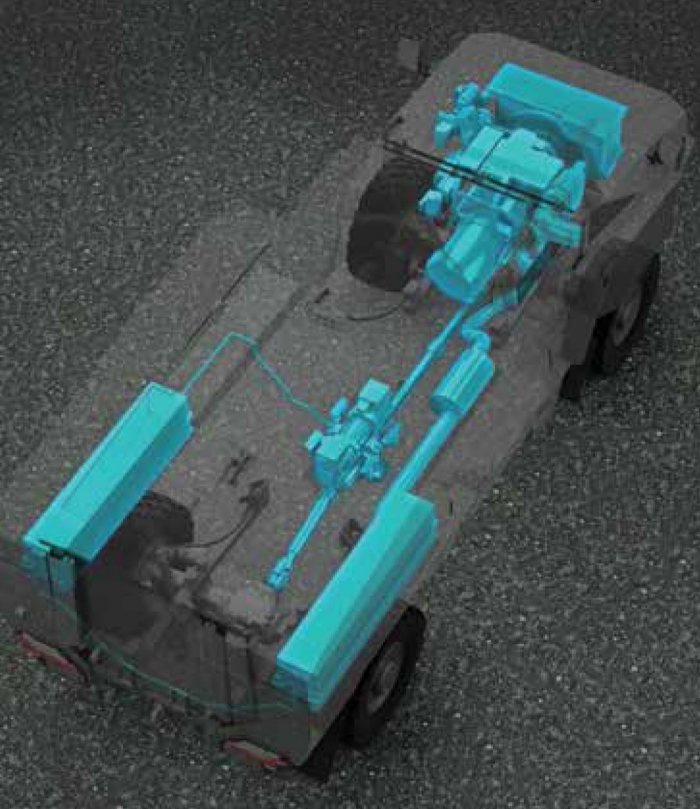


Extended range: Up to 780km



Export Power: Up to 16kW

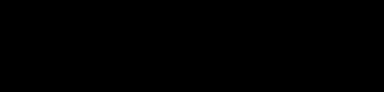
Hybrid Electric Drive



Conventional Drive



TECHNICAL SPECIFICATIONS	
DIMENSIONS	
Length / Height / Width	7,300mm / 2,600mm / 2,700mm
Wheelbase	4,320mm
Track	2,100mm
Ground Clearance	430mm
Occupants (All with seat belts)	Up to 10 seats
<i>* Subject to final configuration</i>	
WEIGHT (INCLUDING ARMOUR KIT)	
Curb Weight	15,000kg (Subject to protection level, options installed and crew)
Payload Capacity	Up to 5,000kg (Subject to protection level, options installed and crew)
Gross Vehicle Weight (GVW)	20,000kg
PROTECTION	
K.E. Protection Mine Protection IED Protection NBC Protection	Configurable to customer's requirement
PERFORMANCE	
Maximum Speed	100km/h
Gradient	60%
Side Slope	30%
Turning Circle Diameter	18m
Approach Angle	Up to 35°
Departure Angle	Up to 35°
Vertical Step Climbing	400mm
Fording Depth	900mm
POWERTRAIN	
Engine Output	296hp @ 2,500rpm
Engine Torque	1,100Nm @ 1500rpm
Max. Operational Altitude	3,600m
Operating Temperature	-15 to 55 °C
Fuel Tank Capacity	212L (Estimated Travel Distance of 600km)
Electric System	550A-24V
Emission Limit	Euro 2
AUTOMOTIVE - OPTIONS	
<ul style="list-style-type: none"> - Hybrid Drive - Euro 5 Exhaust System - High Power 360hp Engine 	<ul style="list-style-type: none"> - Electrical Winch - External Rooftop Lightbar - External Search Lights
ARMOUR - OPTIONS	
Optional armour upgrades are available subjected to vehicle GVW limitation	
WEAPON SYSTEMS - OPTIONS	
ADDER Remote Weapon Station	



ST Engineering Land Systems Ltd
249 Jalan Boon Lay,
Singapore 619523

For more information on product:
www.stengg.com or contact
mktg.landsystems@stengg.com