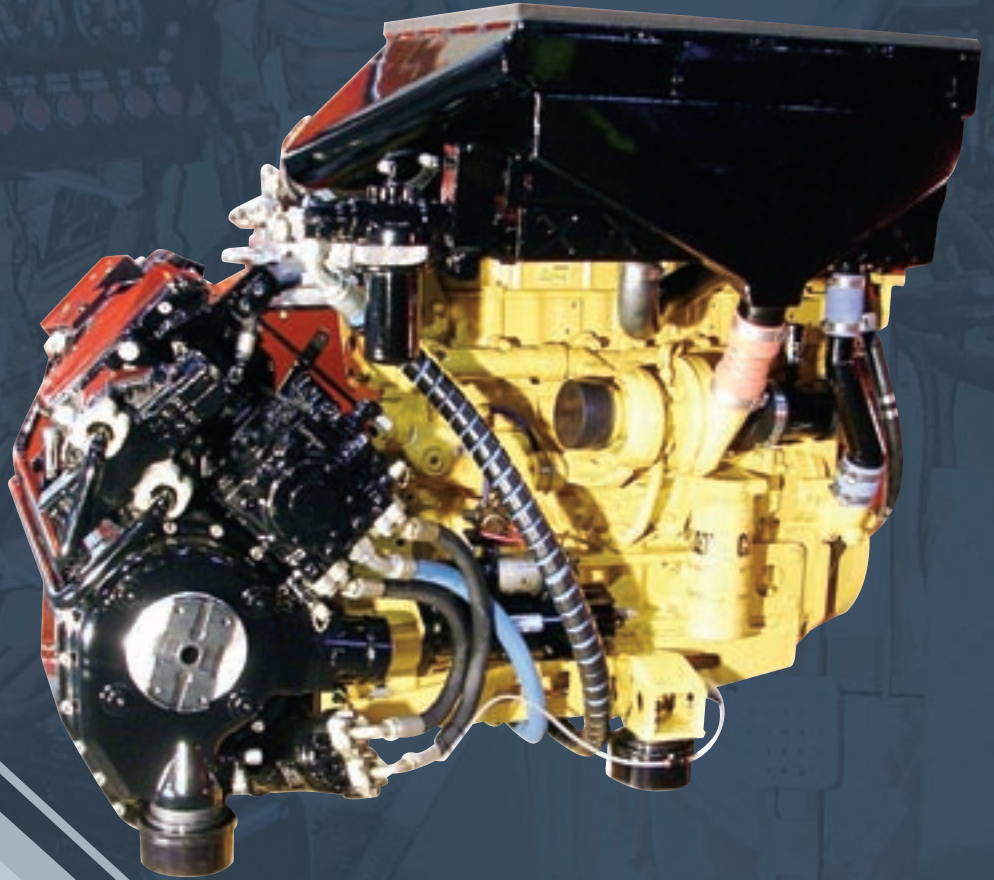


# HMX 1100 UPGRADE KIT



HMX 1100

UPGRADE KIT



- Improved mobility
- Low noise level
- No bulkhead extensions
- Drop in installation

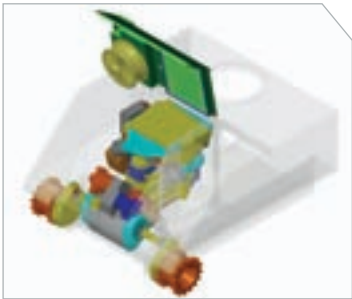
 **Singapore Technologies  
Kinetics**  
A company of Singapore Technologies Engineering



Integrated HMX1100 Powerpack



Enhanced driver control systems



No bulkhead extension required

To meet the operational needs of users who require a fleet of upgraded M113s with improved overall performance and increased payload capability, **Kinetics Drive Solutions Inc. (KDS)** has developed the HMX1100 upgrade kit - a new generation Infinitely Variable Transmission that combines hydraulic and mechanical drive technologies that is managed by a microprocessor.

The powerpack is available in configurations from 275 to 400 hp, and allows a M113 to be upgraded up to 14T without compromising performance. It enhances payload capacity, acceleration, travel speed and cross country maneuverability with the additional benefit of (optional) remote control capability.

A HMX1100 transmission provides all the benefits of a hydrostatic drive at high torque multiplication. Characteristics such as excellent vehicle controllability at all times when operating from crawl to high speeds are inherent with the HMX1100.

The flexible layout of this system offers good possibilities for a wide range of vehicle upgrades and retrofits for both civilian, tracked and wheeled vehicles. Retrofitting work can be carried out in-country through technology transfer.

## Potential Applications

- Low ground pressure fire fighting vehicles for forestry departments
- Security forces needing mobile and armor protective vehicles for extreme conditions
- Off-road capability for ambulance and rescue vehicles
- Recovery vehicles for soft ground use in areas where 4x4 drives are inaccessible

## Technical Specifications

<b>Maximum forward speed on level, hard ground:</b>		>43 mph
<b>Maximum reverse speed</b>		12 mph
<b>Creep speed range (continuous)</b>		0.15 - 3 mph
<b>Maximum forward speed on 60% grade</b>		3.7 mph
<b>Maximum speed in low range:</b>		12 mph
<b>Acceleration to 0-20 mph:</b>		<9 sec
<b>Crusing range</b>		>354 miles
<b>Drift (on hard paved ground)</b>		<1.5' in 300'
<b>Braking 20 mph - 0 mph:</b>	30'	<b>Average cross-country speed:</b> 12 - 21 mph
<b>Turning radius (driving) continuously variable based on vehicle speed:</b>		10' at 6 mph 53' at 43 mph
<b>Turning radius</b>	pivot to infinite	<b>Pivot steer time:</b> 7 sec/360°
<b>Side slope</b>	40%	<b>Forward slope</b> 60%
<b>Ambient operating capability:</b>		- 40°F** to 125°F

\*\* Cold weather kit required

Note: Specifications are subject to changes by the manufacturer without prior notice.