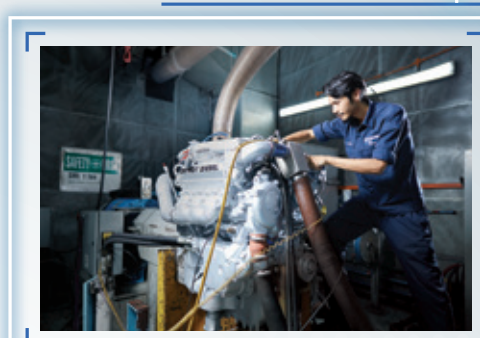


MAINTENANCE, REPAIR & OVERHAUL (MRO)

Reliable end-to-end support for entire MRO cycle

We offer a wide range of precision engineering solutions and mechanical capabilities to support and service assets such as engine and transmission maintenance, repair, overhaul, diagnostics and testing, as well as engine remanufacturing.



Engine Remanufacturing

Using precise measurements, OEM specifications and machining processes, we have a full range of solutions at our remanufacturing facilities to ensure that every engine is remanufactured to 'almost new' condition for any work environment.



ENERGY

Extensive energy solutions, customisable to meet your needs

We provide a diverse range of energy solutions and services to data centres, offshore and marine, healthcare, industrial, education, construction and infrastructure sectors such as commercial buildings, seaports and airports. This includes power system solutions, as well as the design, engineering, assembly, testing and commissioning of Gensets and Hydraulic Power Units.



RAIL SOLUTIONS FOR NEXT GEN MOBILITY



RAIL SOLUTIONS & SERVICES

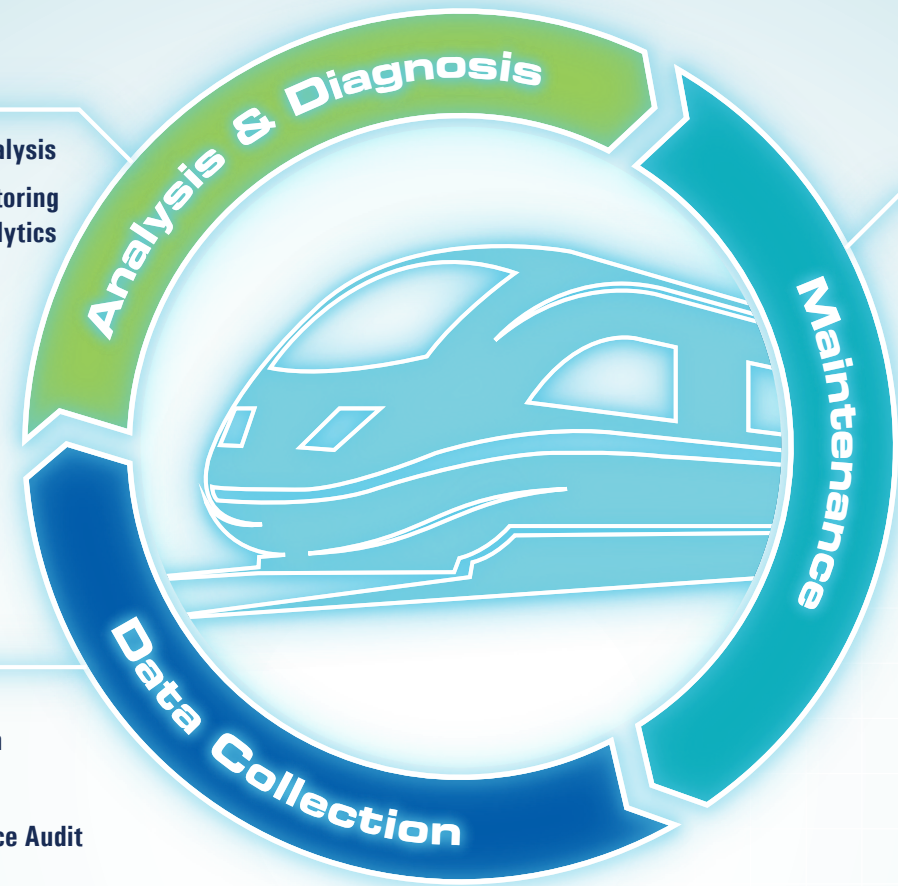
Aimed at building rail reliability, efficiency and sustainability, our holistic rail solutions are able to address common pain points - tunnel cracks, bolt defects, signaling issues or passengers' ride experience.



- Engineering Analysis
- Condition Monitoring & Platform Analytics



- Sensors & Instrumentation
- Rail Platforms
- Rail Maintenance Audit

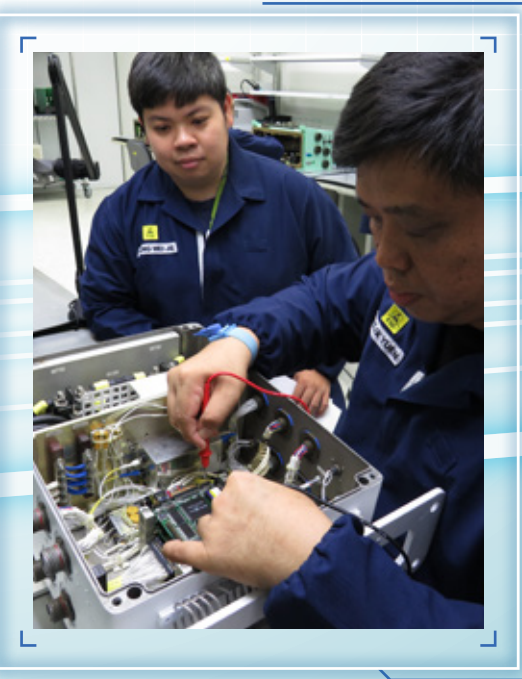


- Electronic card (E-card) repair & reconfiguration
- Engine repair & remanufacturing
- Hydraulic & Hydro-pneumatic Components

WHY US?

ST Engineering is a technology oriented engineering powerhouse with over 50 years of deep engineering expertise. Equipped with future ready solutions, we have a proven track record in improving safety and efficiency to reduce unscheduled downtime.

With a footprint of over 20,000 sqm of workshop facilities, equipped with state-of-the-art test and diagnostic equipment, we offer end-to-end component MRO and system integration services and solutions. Our E-card workshop is also ANSI ESD 20:20 certified, ready to repair E-cards within a fraction of the original turnaround time.



SENSORS INSTRUMENTATION, DATA ANALYTICS FOR PREDICTIVE MAINTENANCE

Data is constantly collected and analysed to ensure scheduling of timely maintenance. This minimises downtime and maximises equipment efficiency at the lowest possible maintenance cost.



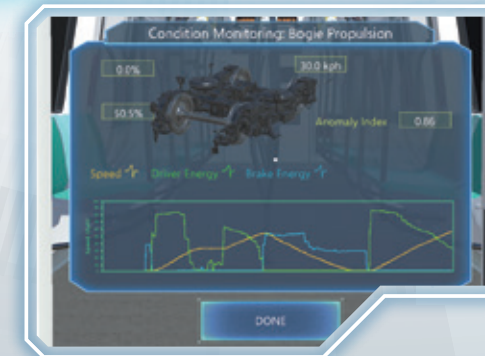
TunnelFox

Inspect tunnels and analyse their health status with our intelligent autonomous vehicle



Improve reliability and performance consistency with advanced Augmented and Mixed Reality solutions for training and operational needs

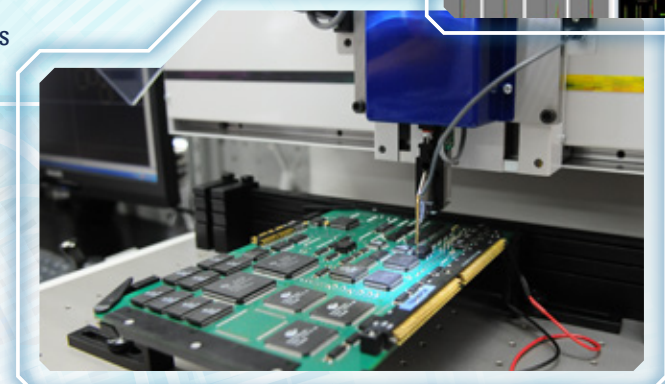
Critical Assets Condition Monitoring and Platform Analytics for better reliability and sustainability of assets



Enhance ride comfort with performance study and monitoring of bogie, wheels, pneumatic systems and suspension

Analyse and diagnose assets' health status with our E-card services and extend asset lifespan

- Lights & Electronics
- Aircon Systems
- Door Control Units



Power your assets with stable and efficient energy

