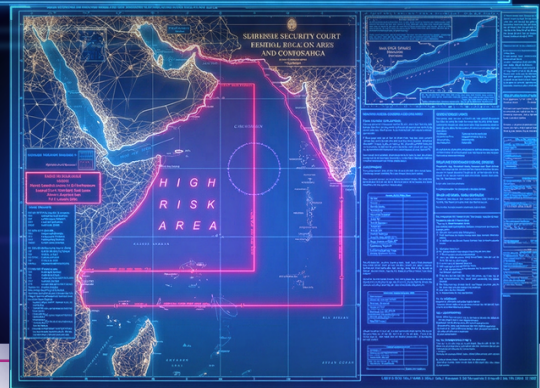
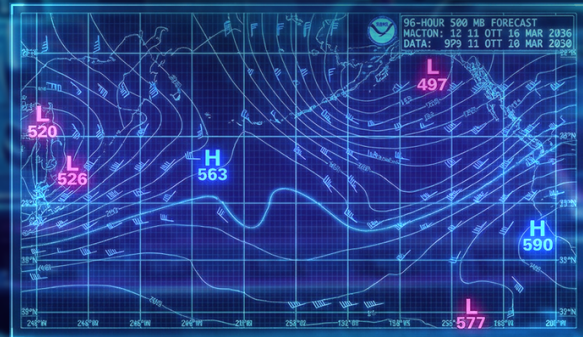
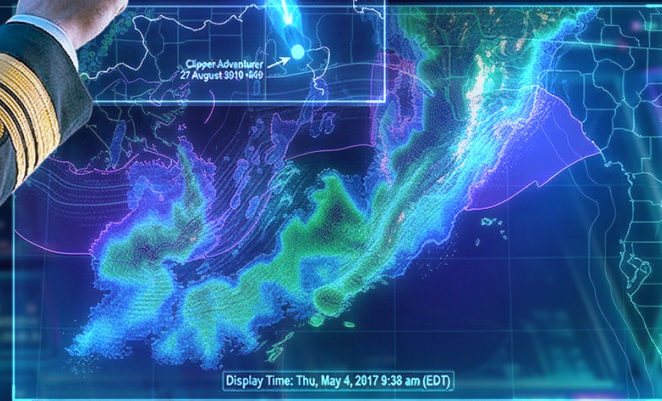


# AGIL® Virtual Navigator



# Voyage Planning – Still Manual

Every voyage begins with a passage plan. But getting there is complex and time-consuming.

## What it involves:

- Interpret nautical charts and publications
- Identify safe and efficient routes
- Assess navigational hazards
- Compile passage documentation
- Manually input routes into Electronic Chart Display and Information System (ECDIS)

## The Reality Today:

- 3–4+ hours per voyage
- Highly dependent on individual expertise
- Manual and fragmented workflow

## The Impact:

- Inconsistent planning standards
- Repetitive manual workload
- Limited visibility and standardisation

## A Need for Transformation

A smarter approach to voyage planning

AGIL® Virtual Navigator transforms voyage planning into a streamlined, integrated digital workflow.

By consolidating key inputs—weather, currents, navigational hazards, and real-time data—it automatically generates optimised routes and complete planning packages within minutes.

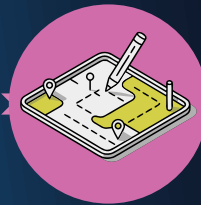
Planners can shift from manual compilation to review, validation, and refinement, with outputs ready for immediate use on the bridge.

# From Manual to Digital: A Better Way to Plan

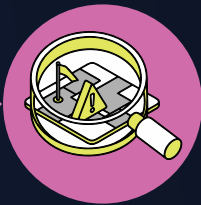
## Current Workflow: Manual Passage Planning



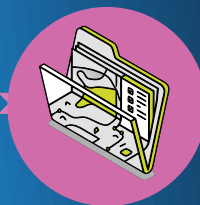
Charts & Publications



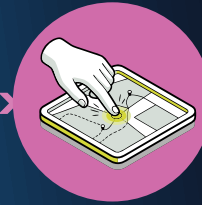
Manual Route Planning



Hazard Identification



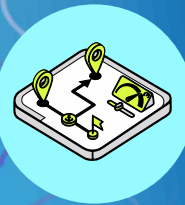
Passage Plan Documentation



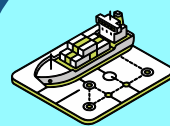
Manual Entry into ECDIS

- *Time-consuming (3-4 hours)*
- *Dependent on individual expertise*
- *Inconsistent outputs*

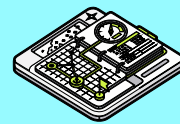
## Enhanced Workflow with AGIL® Virtual Navigator



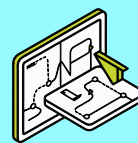
Voyage Input  
(origin, destination, speed)



Automated  
Route  
Generation



Passage  
Workbook



RTZ Export



Import  
into ECDIS

- ✓ *Completed in minutes*
- ✓ *Standardised and consistent*
- ✓ *Ready for bridge execution*

# Core Capabilities

## Automated Route Generation

Computes voyage routes across shipping lane networks, producing realistic and operationally relevant routing.

## Real-Time Data

Enables planners to review and refine routes based on operational considerations such as:

- Weather conditions
- Traffic patterns
- Voyage constraints

## Passage Workbook

Automatically generates professional passage planning documentation, including:

- Waypoint tables
- Leg distances and courses
- Voyage summaries

## ECDIS-Ready Route Export

Exports routes in standard RTZ format for direct import into ECDIS—eliminating manual waypoint entry.

## Scenario Generation for Training

Supports rapid creation of multiple voyage plans for realistic training and capability development.

# Key Benefits

- Significant Time Savings - Reduce voyage planning time from hours to minutes
- Consistency Across Operations - Standardised passage plans and documentation across vessels and teams
- Improved Workflow Efficiency - Seamless, streamlined process from planning to execution
- Enhanced Decision-Making - Shift focus from manual preparation to validation and optimisation

## Enabling the Future of Voyage Planning

- Supports rapid creation of multiple voyage plans for realistic training and capability development.
- AGIL® Virtual Navigator enhances operational efficiency and safety by digitising the passage planning process.
- By combining structured routing logic with automated documentation, it enables maritime operators to prepare voyages with greater:
  - **consistency**
  - **clarity**
  - **confidence**



**ST Engineering Training & Simulation Systems Pte. Ltd.**  
[www.stengg.com](http://www.stengg.com)  
[trainingsimulation@stengg.com](mailto:trainingsimulation@stengg.com)

© 2024 ST Engineering Training & Simulation Systems Pte Ltd All rights reserved.  
DOP 0426



[www.stengg.com/training-and-simulation](http://www.stengg.com/training-and-simulation)