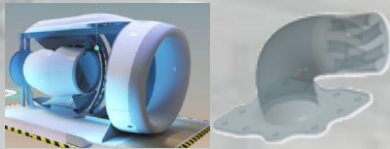


## Other Delivered Solutions



Original AM



Qualified IN625 part with >20%  
weight and cost savings  
**Duct**

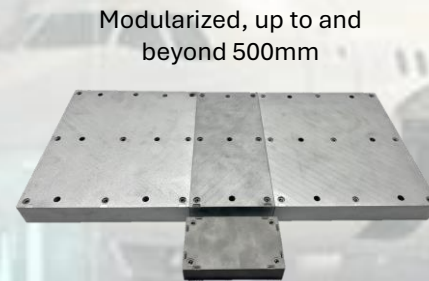


Delivered and installed on aircraft  
within 7 days of customer enquiry  
**Seat Shroud**



Original AM

Lead time decreased by 90%,  
improved corrosion resistance  
**Closed Impeller**



Modularized, up to and  
beyond 500mm  
  
> 2x improvement over  
benchmark, modularizable  
**Thermal management system**



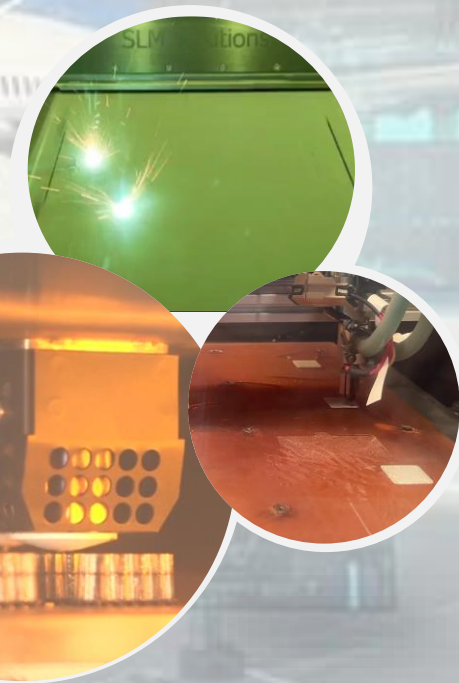
Scan to drop us an email for all  
your AM needs and enquiries



Scan to visit our AMDC  
website

# Your preferred part solutions provider

Advanced Manufacturing Design Centre





## Capabilities

> 2000

Additive Manufactured  
airworthy parts

>120

Part number – production  
digital catalogue

5 • 4 • 3

Qualified  
Machines • Material • AM  
technology

>15

Airlines served

Approval for Design  
& Production under



Value Adding



Lightweighting



Improving  
durability



Sustainable



Reduce lead  
time



Obsolescence  
Management



Just in time  
production

## One-stop parts solution

### Industry-leading accolades and accreditation

- EASA Design and Production approval
- CAAS Design and Production approval
- AS9100 & ISO 9001
- ISO45001
- ISO14001

### Multidisciplinary engineering expertise

- Design & Simulation
- Reverse Engineering
- Certification & Compliance

### Certified value chain

- > 5 3D printers qualified for aerospace parts
- > 20 3D printers, able to print up to 1.5 metre parts
- > 150 suppliers and collaborators for secondary processing

### Solution trusted by industry leaders

- > 6000 certified parts delivered
- > 50 customers across industries
- > 10 strategic customers



Automotive



Aerospace & Defence

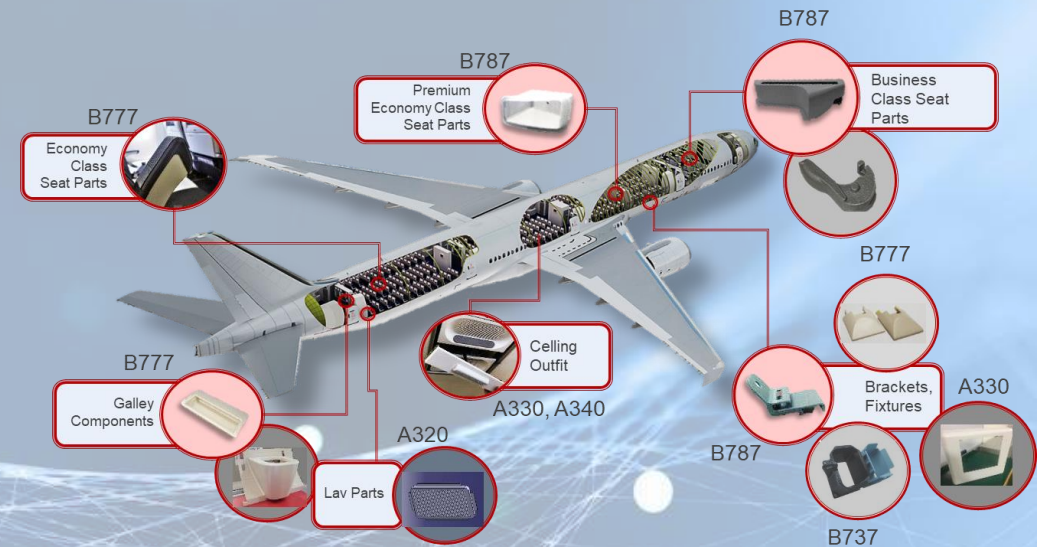


Maritime and offshore



Energy & Emerging market

## Aircraft parts



## Examples

### BI-FOLD DOOR HINGE

Part Number: 08T052A123-3

Aircraft : B777

Better durability, shorter lead time



### FRONT U-FOIL (UPPER)

Part Number: 5010254303200DM

Aircraft : B777

Better durability, improved availability



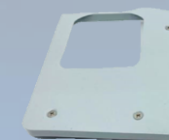
### PLATE ASSEMBLY (PAX Door)

Part Number: D5348015900700

(RH), D5348015900600 (LH)

Aircraft: A320

Corrosion free, lightweighting



### INTERIOR SIDE WALL LINER BRACKET - MOPSIL

Part Number: C333161-7,  
833Z1810-1

Aircraft: B787

Better durability

