

EtherCrypt U1000



High Performance L2 Encryptor

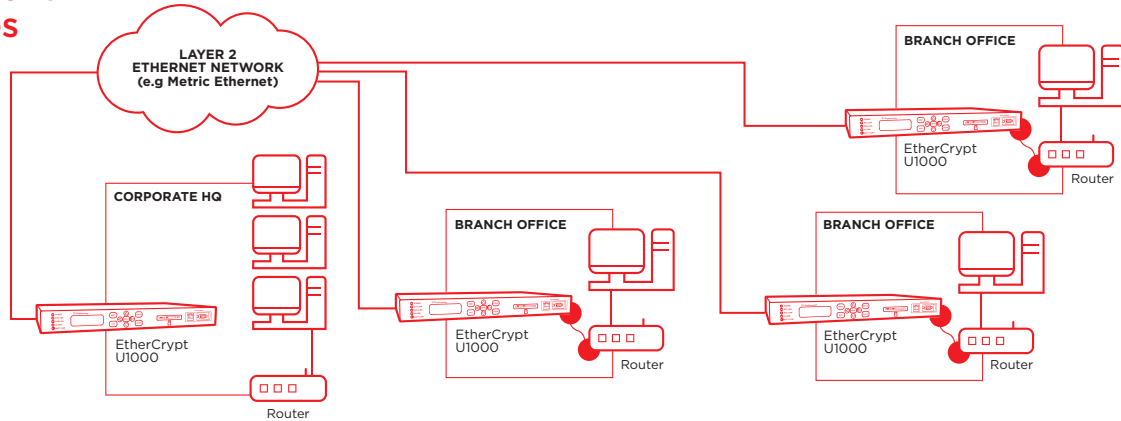
EtherCrypt U1000 is a layer-2 encryptor that protects the transmission of sensitive data over 1Gbps Ethernet and Metro-Ethernet networks. It offers full duplex encryption up to 1Gbps using the AES-256 algorithm, and is suitable for point-to-point, point-to-multipoint and fully-meshed Ethernet networks.

It can be easily deployed into existing networks without any changes to the network configuration and supports unicast, multicast and broadcast Ethernet frames. Designed to the strictest security standards, EtherCrypt U1000 includes a tamper-resistant chassis, emergency erasure and active zeroization. It also incorporates a FIPS 140-2 level 3 certified secure platform module – TrustCrypt for secure key storage and cryptographic processing.

Key Features

- High-assurance encryptor
- 1Gbps throughout
- Over Temperature Detection
- Emergency Erasure Button

Deployment Use Cases



Specifications

Performance	Full duplex operation at speeds up to 1Gbps
Network Interfaces	Network: Ethernet II, IEEE 802.3 Gigabit Ethernet ports with SFP interface (single mode, multi mode and copper)
Cryptography	AES 256 CFB mode Supports customized algorithm
Key Management	Proprietary key management Parameter loading using smartcard Automatic and transparent session key negotiation
Device Management	Local console port (9 pins D serial port) 100 Base-T RJ45 Ethernet port - for remote monitoring SNMP V2c (operates with standard SNMP network management station)
Physical Security	Tamper resistant chassis Tamper detection and response (FIPS 140-2 Level 3) Active zeroization of cryptographic data upon tamper detection User PIN protected Front Panel Menu High temperature detection Emergency erasure function
Operating Environment	Operating Temperature: 0°C to 40°C Relative Humidity: 0 to 90% Storage Temperature: -20°C to 65°C Meets FCC Part 15, Class B EMI/RFI requirements
Physical Characteristics	Dimension: 420mm (W) x 270mm (D) x 44mm (H) Weight: 3Kg PSU: 110/230VAC @ 50/60Hz, 30W
Networking Features & Protocols	Supports Ethernet Layer 2 encryption Point-to-point, point-to-multipoint, multipoint-to-multipoint meshed networks Unicast, multicast and broadcast Ethernet frames
Security/Configuration	Automated power-up self tests Alarm/Audit log messages stored in memory with date and time LED indicators for link status monitoring Front Panel Menu-driven setup Battery Backup of cryptographic variables
Accreditation	TrustCrypt - FIPS 140-2 level 3 certified cryptographic module (certificate #1304)
Optional	
Key Management System (KMS)	Windows-based software system for key exchange parameter generation
Smartcard	Configuration card for user authentication and cryptographic key parameters
Feature	Supports customized algorithm loading feature