

EtherCrypt U2000



High Performance L2 Encryptor

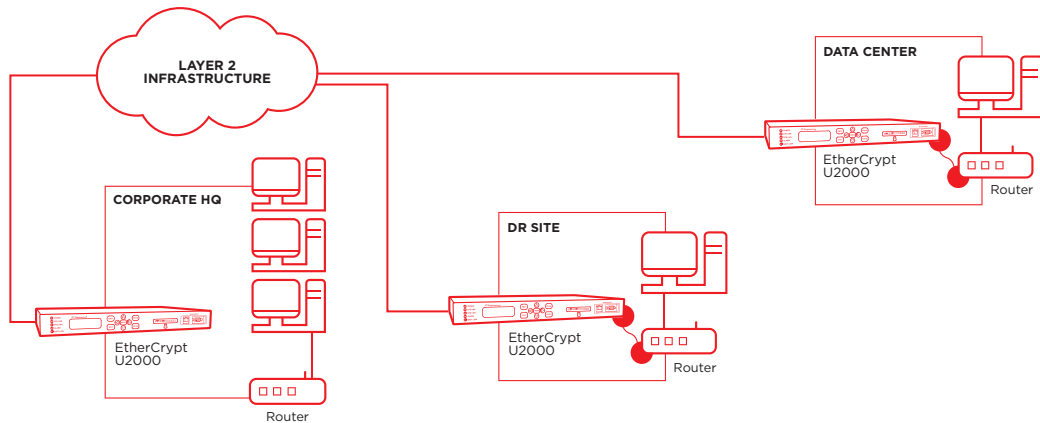
EtherCrypt U2000 is a layer-2 encryptor that protects the transmission of sensitive data over 10Gbps Ethernet and Metro-Ethernet networks. It offers full duplex confidentiality, integrity and replay protections using AES-256 Galois Counter Mode (GCM) encryption algorithm, and is suitable for point-to-point, point-to-multipoint and fully-meshed Ethernet networks.

It can be deployed easily into existing networks without any changes to the network configuration and supports unicast, multicast and broadcast Ethernet traffic. Designed with strictest security standards, EtherCrypt U2000 includes a tamper-resistant chassis, emergency erasure and active zeroization of encryption key. It also incorporates a FIPS 140- 2 Level 3 certified secure platform module for secure key storage and cryptographic processing. In addition, it comes with in-built over temperature detection.

Key Features

- High-assurance encryptor
- Low overhead line-rate encryption at 10Gbps
- Supports AES-GCM algorithm for data confidentiality, integrity and anti-replay
- Redundant Power Supplies
- Over Temperature Detection
- Emergency Erasure Button

Deployment Use Cases



Specifications

Performance	Low overhead line-rate encryption at 10Gbps
Network Interfaces	2 x 10 Gigabit Ethernet ports (Trusted, External) with SFP+ interfaces - Fiber optic: LC connector, multi-mode/single mode - Copper: RJ45
Cryptography	Confidentiality, integrity and replay protections with Advanced Encryption Standard (AES-256) Galois Counter Mode (GCM) encryption algorithm Hardware Random Number Generator (HRNG)
Key Management	Proprietary Key Management System Parameter loading using smartcard
Device Management	Local console port (9-pin serial port) SNMP Port: 1 x 10/100 Mbps Ethernet RJ45 for remote monitoring
Physical Security	Tamper resistant chassis Tamper detection and response (FIPS 140-2 Level 3) Active zeroization of cryptographic data upon tamper detection User PIN protected front panel menu High temperature detection Emergency erasure button
Operating Environment	Storage Temperature: -20°C to 70°C Operating Temperature: 0°C to 40°C Humidity: Relative 10% - 95%, non-condensing EMC/EMI: FCC Part 15 Class B
Physical Characteristics	Dimension: 430mm (W) x 355mm (D) x 44mm (H) Weight: 5.25Kg Redundant Hot-Swap PSU: 100-240V AC @ 50/60Hz or 36-72V DC, 300W
Networking Features & Protocols	Support Ethernet Layer 2 encryption Support for Jumbo frames up to 8000 bytes Point-to-point, multipoint-to-multipoint
Security/Configuration	Audit logging Alarm detection and reporting SNMP v2c network management (operates with standard SNMP network management station)
Accreditation	TrustCrypt - FIPS 140-2 level 3 certified cryptographic module (certificate #1304)
Optional	
Smartcard	Configuration card for users authentication and cryptographic key parameters
Feature	Supports customized algorithm loading feature